

2nd International Conference On Mental Health and Psychiatry

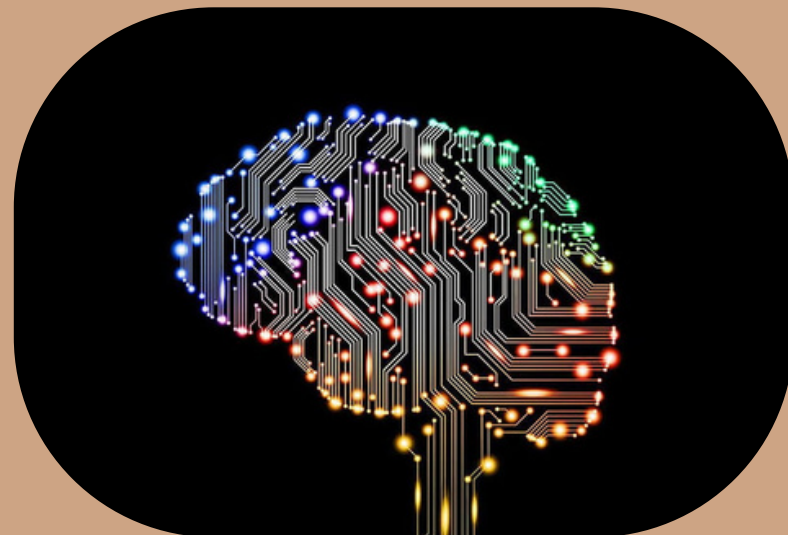
Theme: Transformative Innovations in Mental Health and Brain Research



Date
09-Oct-2025



Venue
Tokyo, Japan



ABOUT US

Welcome to Sciconx Conferences, a nexus of knowledge pursuit and fervent dedication to scientific advancement. At Sciconx, our commitment lies in cultivating a dynamic platform that not only interprets ideas but also transforms them into the fundamental elements of groundbreaking scientific innovation spanning diverse fields, including life science, medical science, healthcare, business, management, physical science, social sciences, and more. Our journey is anchored in the belief that every idea harbors the potential to instigate transformative change.

Going beyond the conventional role of a conference organizer, Sciconx functions as a collaborative ecosystem: a meeting ground for thought leaders, researchers, and visionaries. It is not merely an organizer but a platform where minds converge to decipher the intricacies of ideas, enriching scientific understanding. We take pride in curating an environment that not only fosters dialogue but also facilitates collaboration, amplifying the collective wisdom of the scientific community.



About Conference

Mental health and psychiatry encompass a wide spectrum of issues that influence emotional, psychological, and social well-being. Addressing these challenges is essential for both individual growth and the overall health of society. Mental health shapes how we think, feel, and behave, playing a key role in how we manage stress, build relationships, and make important decisions. Psychiatry is at the forefront of diagnosing, treating, and supporting individuals facing mental health disorders. These conditions can range from common challenges such as anxiety and depression to complex illnesses like schizophrenia and bipolar disorder. Psychiatrists employ a comprehensive approach, combining therapy, medication, and evidence-based holistic methods, customized to meet each individual's unique needs. By advancing understanding and treatment strategies, psychiatry continues to make a profound impact on improving the quality of life for individuals, families, and communities worldwide.

The field of psychiatry continues to evolve, embracing emerging technologies and interdisciplinary approaches to enhance patient outcomes. Innovations such as tele psychiatry, artificial intelligence, and digital mental health tools are revolutionizing the way care is delivered, making treatment more accessible and personalized. Additionally, integrative care models that combine mental health services with general healthcare are gaining traction, addressing the complex interplay between physical and mental well-being.

CONFERENCE HIGHLIGHTS

- Keynote forums by Renowned Speakers
- Speaker Forum
- Poster Sessions on latest Innovation in all the relevant Areas
- Panel discussions and interactive sessions.
- Open Innovation Challenges
- Poster Sessions on every career stage
- Post-Doctoral Career Development Session
- Young Research Forum
- B2B Meetings
- Global Networking with 50+ Countries
- Best platform for Global business and Networking opportunities

TARGET AUDIENCE

- Doctors and Scientists
- Healthcare professionals and Educators
- Universities, Associations, and Societies
- Students and Research Scholars
- Business Delegates
- Product Manufacturer



Session Highlights

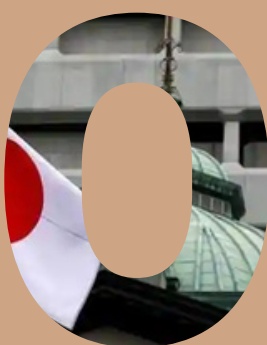
- Behavioural and Cognitive Neuroscience
- Central Nervous System
- Geriatric Neurological Disorders
- Brain Stimulation and Computational Neuroscience
- Addiction and Adult Psychology
- Mood Disorders
- Neurodevelopmental Disorders
- Bipolar Spectrum Disorders
- Stress, Trauma, and Resilience
- Schizophrenia and Psychosis
- Sleep Disorders
- Childhood Trauma and Mental Health
- Epilepsy & Brain Disorder
- Cerebrovascular and Critical Care Neurology
- Neurodegenerative Disease
- Neuroscience and Neurology
- Anxiety Stress
- Autism Spectrum
- Personality Disorders
- Psychotherapy Techniques



About Venue

Tokyo is the capital city of Japan and one of the most populous urban areas in the world. It serves as the political, economic, and cultural centre of Japan and is part of the Tokyo Metropolis, which has a population of over 14 million people within the city limits. The Greater Tokyo Area, which includes nearby cities such as Yokohama, Saitama, and Chiba, is home to over 37 million people, making it the most populous metropolitan area on the planet. Tokyo is located on the eastern coast of the island of Honshu, facing the Pacific Ocean, and is known for its blend of modern architecture and historic landmarks. Tokyo is a global hub for technology, finance, and innovation, while maintaining a deep connection to traditional Japanese culture. The city is famous for its skyscrapers, vibrant shopping districts like Shibuya and Shinjuku, and historical sites such as the Meiji Shrine and Senso-ji Temple. Tokyo is also home to world-class museums, art galleries, and a thriving entertainment scene. The city's cuisine is renowned worldwide, with sushi, ramen, tempura, and other Japanese delicacies readily available in both upscale restaurants and street food stalls.

Venue Highlights



Registration Details

Category	Only Registration	2 Nights Accommodation	3 Nights Accommodation	Gold Sponsor
Academic	€ 599	€ 398	€ 597	
Business	€ 649	€ 398	€ 597	€ 5631
Student	€ 549	€ 398	€ 597	

Group Registration

Group registration is the purchase of group tickets by one individual for a total group with discounted registration charges. A minimum of 5 members will be considered as a group and are eligible for a flat 20% discount on registration charges.

Click here for more

Top Reasons To Participate

- Develop Your Network
- Position Yourself as an Expert
- Meet Experts & Influencers Face to Face
- Gain Targeted Knowledge
- New Tips & Tactics
- Invest In Yourself
- Gain New Collaborations
- Present your Ideas and Work
- Be Inspired
- Travel, Explore and Have Fun!!

For Exhibition and Sponsorships



UNIQUE FEATURES

- ☞ The Career Guidance Workshops to the Graduates, Doctorates and Post-Doctoral Fellows.
- ☞ Accepted Abstracts will be published in the respective journals and will be labelled with a Digital Object Identification Number (DOI) provided by Cross Ref (Free abstract publishing).
- ☞ Lifetime Speaker and Abstract pages created and indexed in Google on your name, would get worldwide acknowledgment to your profile and Research.
- ☞ Group of attendees from the same lab/institute/university (or) anyone who wish to attend the conference will be eligible for discounts.
- ☞ For Students Best Poster and Young Researcher Award.



YOUTH FORUM

ELIGIBILITY

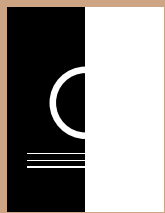
- ☞ Young Investigators (e.g. Post-Graduate students, Post-doctoral fellows, Trainees, Junior faculty) are the focus of this event.
- ☞ Opportunity for young researchers to learn about the research areas of their peers to increase their capacity as multidisciplinary researchers

BENEFITS

- ☞ The forum will provide an opportunity for collegial interaction with other speakers and established celebrative across the globe.
- ☞ Young Researcher Award will be given to the best presentation by the organizing committee member.

SPEAKER'S PPT

- ☞ You may submit your presentation to any of our onsite organizers on the day of your talk. If your presentation is not compatible with our laptops, then you may also use your own laptop.



POSTER GUIDELINES

- ☞ This competition is open to all students (Graduates, Post Graduates and Research Scholars not above the age of 35).
- ☞ The abstract submission deadline for poster competition will be closed one month before the conference date (this is subject to change), hence all are requested to submit their abstracts well in advance.
- ☞ The abstract should include complete details of the contestant (e.g., abstract title, name, affiliation, abstract and biography etc).
- ☞ Abstracts have to be submitted through online or by email. Shortlisted abstracts for the competition will be intimated through email and those will be displayed on the website as well.



Important Dates

**Abstract submission opens
20-12-2024**

**Registration Opens
20-12-2024**

Website Info:



<https://www.sciconx.com/mentalhealth>



<https://www.sciconx.com/mentalhealth/abstract>



<https://www.sciconx.com/mentalhealth/registration>

Contact Us:



Mail us to know more!

For Abstract Submission Guidelines | For Reserving your slot |
Proposals | Registration | Posters | Accommodations
No doubt you have lots of queries... Why not get in touch..!
Drop us your query with details and we will call you right away



For Queries Contact:

Emma Mathews | Program Manager
Email: mentalhealth@sciconxevents.com
Phone: +44 1760 480008