

# 14<sup>TH</sup> ADVANCING WOMEN'S LEADERSHIP IN PHARMA AND HEALTHCARE

FEATURED SPEAKERS

## KEYNOTE SPEAKER



Kathryn G. Schubert  
President & CEO

SOCIETY FOR  
WOMEN'S HEALTH  
RESEARCH

## CONFERENCE CHAIR



Abby Kennedy  
Senior Vice  
President, Clinical  
Operations

DERMBIONT



Brittany Barreto  
Author of Unlocking  
Women's Health,  
CEO

FEMHEALTH  
INSIGHTS



Sara Klein  
Chief Legal Officer  
and Corporate  
Secretary

ALUMIS



Meena  
Narayanan  
Process Analytical  
Scientist

POSEIDA  
THERAPEUTICS



Mindy  
Sivasubramanian  
Senior Director,  
Clinical Operations

ALUMIS



Crystal V. Brown  
Vice President  
Operations/COO

METHODIST  
MANSFIELD  
MEDICAL CENTER



Molly Salyers  
Senior Director,  
Regulatory Affairs

VIR  
BIOTECHNOLOGY



Ana Sousa  
Chief Regulatory  
Officer

ASPEN  
NEUROSCIENCE

## DYNAMIC, TIMELY AND IMPACTFUL TOPICS FOR DISCUSSION

- Techniques for Managing Competitive Colleagues and Building Collaborative Teams
- Discover Why Empathetic Leadership is the Path to Sustainable Success
- Discuss Strategies for Women Advancing to the C-Suite in Biopharma, Med Tech, and Healthcare
- Build Confidence, Overcome Imposter Syndrome and Take Your Seat at the Table
- Walk Away With A Negotiation Toolkit for Women in Life Sciences and Health Care

GOLD SPONSOR



SILVER SPONSOR



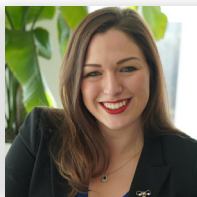


## SPEAKING FACULTY



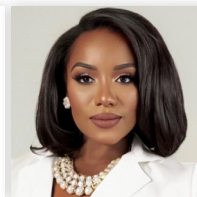
Sheila Arquette  
President & CEO

**NATIONAL ASSOCIATION OF SPECIALTY PHARMACY**



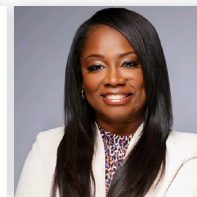
Brittany Barreto  
Author of Unlocking Women's Health, CEO

**FEMHEALTH INSIGHTS**



Jvawna Bell  
former Director, US HEOR

**PAYER AND HEALTH SYSTEM ENGAGEMENT**



Crystal V. Brown  
Vice President Operations/COO

**METHODIST MANSFIELD MEDICAL CENTER**



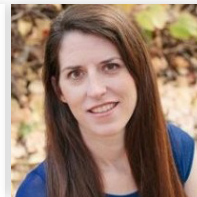
Allison Doherty  
US Executive Medical Lead, Hematology

**GSK**



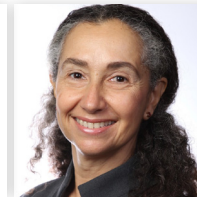
Barbara Elashoff  
Biostatistician

**PIVOTAL LIFE SCIENCES**



Diana Frank  
Director, Payer Value Marketing

**AMGEN**



Mirta Grifman  
Vice President, Clinical Development and External Innovation

**BIOSPLICE THERAPEUTICS**



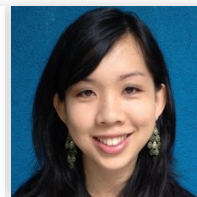
Melissa Hagan  
Director Strategic Evidence, Market Access

**BEIGENE**



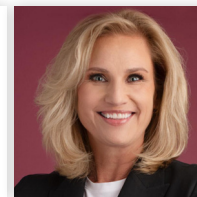
Colleen Hauk  
Founder & CEO

**THE CORPORATE REFINERY**



Julie Huang  
former Staff Scientist

**ALECTOR**



Jennifer Johnson  
CEO

**PROJECT VELOCITY**



Abby Kennedy  
Senior Vice President, Clinical Operations

**DERMBIONT**



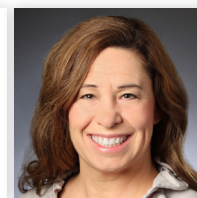
Sara Klein  
Chief Legal Officer and Corporate Secretary

**ALUMIS**



Tricia McKernan  
Senior Compliance Manager, Global Transparency

**STRYKER**



Sara Riedel  
Founder/CEO

**KALA MENTORING**



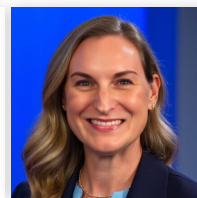
Valerie Menaker  
Director, Strategy, Operations and Learning

**ABBVIE**



Molly Salyers  
Senior Director, Regulatory Affairs

**VIR BIOTECHNOLOGY**



Kathryn G. Schubert  
President & CEO

**SOCIETY FOR WOMEN'S HEALTH RESEARCH**



Meena Narayanan  
Process Analytical Scientist

**POSEIDA THERAPEUTICS**



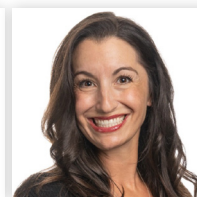
Mindy Sivasubramanian  
Senior Director, Clinical Operations

**ALUMIS**



Ana Sousa  
Chief Regulatory Officer

**ASPEN NEUROSCIENCE**



Alison Vandenburg  
Executive Director, Patient Engagement - Metabolic

**ULTRAGENYX**

## ASSOCIATION PARTNERS



**AWIS**  
ASSOCIATION FOR WOMEN IN SCIENCE



**Society for Women's Health Research**

**HBA** Healthcare Businesswomen's Association



**NATIONAL ASSOCIATION OF SPECIALTY PHARMACY**

**REGISTER**



## WHY YOU SHOULD ATTEND

The 14<sup>th</sup> Advancing Women's Leadership in Pharma and Healthcare provides a powerful platform to learn from inspiring female leaders and grow both personally and professionally. By attending, you become part of a vibrant community committed to breaking barriers and driving meaningful change, empowering you to lead with confidence and authenticity. Here are 10 compelling reasons why this highly regarded event is not to be missed:

1. Empower Professional Growth
2. Build Connections and Foster Collaborations
3. Gather Diverse Perspectives and Expert Insights
4. Advance Gender Equity
5. Advance Diversity and Inclusion
6. Shape Skills, Strategy and Technique
7. Be Inspired
8. Gain Confidence
9. Overcome Challenges
10. Promote Leadership

Throughout two full-days comprised of keynotes, instructive sessions, panels and storytelling, you will hear from accomplished leaders on critical issues including:

- Realize the power of allyship
- Obtain techniques for managing competitive colleagues
- Understand the impact of menopause
- Discover strategies for women advancing to the C-Suite
- Appreciate big data and AI
- Protect yourself through mergers & acquisitions

The 14<sup>th</sup> AWLC is the best place to share experiences and realize you are not alone in facing professional hurdles. Join your peers and build confidence in your ability to lead, drive change and growth within your organization and across the industry.

## WHO ATTENDS

Aspiring professionals in the pharmaceutical, biotech, medical device, and health care sectors seeking knowledge and connections to facilitate career success and the advancement of women's leadership.

## ARE YOU READY TO REGISTER?



### CONTACT TO ATTEND

**Marcie Cruz**  
at (561) 922-7817  
or [macruz@dgeconfs.com](mailto:macruz@dgeconfs.com)  
for more information.

## REACH KEY DECISION-MAKERS



### CONTACT TO SPONSOR

**Amy Chapman,**  
at (561) 571-7687  
or [achapman@dgeconfs.com](mailto:achapman@dgeconfs.com)

7:15 AM	<b>Registration and Networking Breakfast</b>
8:15 AM	<b>Chair's Welcome and Opening Remarks</b> Abby Kennedy, Senior Vice President, Clinical Operations, <b>DERMBIONT</b>
8:30 AM	<b>PANEL: Leading with Empathy: Discover Why Empathetic Leadership is the Path to Sustainable Success in Leadership</b>

In today's fast-paced, high-stakes work environment, empathetic leadership has emerged as a crucial skill for driving team performance, fostering innovation, and achieving lasting success. Whether you're a new manager or a seasoned executive, this session will provide insights and strategies to make empathy a central part of your leadership approach.

- Learn how empathetic leadership can increase employee engagement, reduce turnover, and improve outcomes across your organization
- Realize how empathy not only builds stronger, more resilient teams but also empowers you to make better, more informed decisions
- Join us to discover why empathy is not just a soft skill but a pathway to sustainable success in leadership
- Explore ways to lead with empathy, connect authentically with your team, understand diverse perspectives, and cultivate a positive work culture

**PANELISTS:** Diana Frank, Director, Payer Value Marketing, **AMGEN**  
Jvawwna Bell former Director, US HEOR, **PAYER AND HEALTH SYSTEM ENGAGEMENT**  
Sheila Arquette, President & CEO, **NATIONAL ASSOCIATION OF SPECIALTY PHARMACY**

9:15 AM	<b>Negotiation Toolkit for Women in Life Sciences and Health Care</b>
---------	---

In the rapidly evolving field of life sciences, strong negotiation skills are essential for career advancement, project success, and securing necessary resources. Through real-world examples, interactive discussions and actionable advice, this session aims to boost your confidence and negotiation prowess.

- Gain practical negotiation techniques tailored to the unique challenges you may face
- Learn strategies to advocate for yourself effectively, whether you're negotiating salary, research funding, team resources, or leadership opportunities
- Walk away with a toolkit to strengthen your influence, create mutually beneficial outcomes, and advance your career with purpose

Barbara Elashoff, Biostatistician, **PIVOTAL LIFE SCIENCES**

10:00 AM	<b>Networking Refreshment Break</b>
----------	-------------------------------------

10:30 AM	<b>Craft a Powerful Personal Brand to Fuel Your Career Growth</b>
----------	---

As a leader within your organization, you have a unique opportunity to stand out and reach new heights in your career. Dive deep into the concept of personal branding and walk away with a clear roadmap for building a powerful personal brand that empowers you to shine and fuels professional growth.

- Uncover your current brand identity
- Craft your ideal brand image
- Bridge the gap between where you are and where you want to be
- Best practices for taking your personal brand to social media

Sara Riedel, Founder/CEO, **KALA MENTORING**

11:15 AM	<b>Embrace Authentic Leadership and Empowering Teams</b>
----------	--

Discover the impact of authentic leadership and how it can advance not only your career but also the careers of those around you.

- Learn essential strategies for managing people and navigating the challenges in helping others reach their goals
- Promote diversity and gender equity when identifying opportunities for team members
- Develop skills—both for yourself and others—that extend beyond your immediate role, fostering a stronger, more inclusive culture and work environment

Crystal V. Brown, Vice President Operations/COO, **METHODIST MANSFIELD MEDICAL CENTER**

12:00 PM	<b>Networking Luncheon</b>
----------	----------------------------

1:30 PM	<b>Mergers &amp; Acquisitions: Protecting Yourself, Negotiating Exit, or Thriving Through Change</b>
---------	--

Mergers and acquisitions can create uncertainty, but with the right strategies, you can protect your position, negotiate a favorable exit, or even leverage the transition to advance your career. This session will guide you through practical steps to navigate M&A situations with confidence and resilience.

- Learn how to assess your options, negotiate effectively if a release is on the table, and position yourself to thrive if you choose to stay
- Understand the M&A process, advocating for your role, securing beneficial terms, and adapting to new organizational cultures
- Make empowered decisions and handle change with grace

Sara Klein, Chief Legal Officer and Corporate Secretary, **ALUMIS**

2:15 PM	<b>The Power of Allyship in Advancing Women Leaders</b>
---------	---

Successful allyship initiatives have a significant impact on the careers of women leaders. Value unique perspectives on how intentional allyship can drive change, open doors, and create opportunities for women in leadership roles.

- Highlight the strategies that were most effective, the challenges faced, and the measurable outcomes of successful allyship
- Gain insights into what it takes to be a true ally, including advocating for others, sponsoring women for leadership opportunities, and actively creating an inclusive culture
- Find out how allyship can help break down barriers and pave the way for more equitable and diverse leadership in the workplace

Abby Kennedy, Senior Vice President, Clinical Operations, **DERMBIONT**  
Molly Salyers, Senior Director, Regulatory Affairs, **VIR BIOTECHNOLOGY**

3:00 PM	<b>Networking Refreshment Break</b>
---------	-------------------------------------

3:30 PM	<b>Unlock Your X-Factor</b>
---------	-----------------------------

Whether you're presenting to leads on a sales call, colleagues at a team meeting, or leaders at a conference, you must be able to communicate your ideas in a way that gets everyone to raise their hand and say, "I'm in!" Are you ready to unleash your full potential to captivate, persuade, and win over any audience? Get the strategies you need to convert your well-intentioned presentations into ones that sell your ideas.

- Set yourself apart in a competitive environment to open doors for new opportunities
- Command the room to increase your professional reputation and credibility
- Elevate your communication to capture immediate attention and buy-in

Colleen Hau, Founder & CEO, **THE CORPORATE REFINERY**

4:15 PM	<b>Techniques for Managing Competitive Colleagues and Building Collaborative Teams</b>
---------	--

In a high-performing workplace, it's not uncommon to encounter colleagues who view you as competition. Navigating these dynamics effectively is key to maintaining a productive, collaborative environment and advancing your own goals without unnecessary conflict.

- Obtain practical techniques for managing relationships with competitive peers, focusing on strategies to redirect competition into collaboration, set healthy boundaries, and reinforce a team-centered approach
- See how to handle competitive behavior professionally and constructively, while staying focused on your own success
- Pinpoint communication tactics, emotional intelligence skills, and mindset shifts that will help you maintain a positive, influential presence
- Turn competition into an asset and foster mutual respect and cooperation within your team

**MODERATOR:** Valerie Menaker, Director, Strategy, Operations and Learning, **ABBVIE**

**PANELISTS:** Tricia McKernan, Senior Compliance Manager, Global Transparency, **STRYKER**  
Alison Vandenbussche, Executive Director, Patient Engagement - Metabolic, **ULTRAGENYX**  
Jennifer Johnson, CEO, **PROJECT VELOCITY**

5:00 PM	<b>Networking Reception Hosted by Project Velocity</b>
---------	--

6:00 PM	<b>Close of Day One</b>
---------	-------------------------



7:15 AM	<b>Networking Breakfast</b>
---------	-----------------------------

8:15 AM	<b>Chair's Recap of Day One</b> Abby Kennedy, Senior Vice President, Clinical Operations, <b>DERMBIONT</b>
---------	---

8:30 AM	<b>KEYNOTE Embrace Workplace Health and Well-Being: Understand the Impact of Menopause on Your Career</b>
---------	---

From the White House to corporate boardrooms and scientific labs, a more inclusive understanding of women's health will improve wellness for women across the lifespan – and for all of us. Learn how you can demonstrate leadership and support women in the workplace, through the menopause transition and other critical health stages.

**Highlights:**

- Recognize the potential impact of your health and well-being on your career journey
- Understand how with support in the workplace women can embrace wellness through menopause and across their lives
- Be proactive as colleagues, bosses, mentees, and team members with regard to supporting women as they age, such as increasing the number of women involved in strategic decision making across organizations and ecosystems

Kathryn G. Schubert, President & CEO, **SOCIETY FOR WOMEN'S HEALTH RESEARCH**

9:15 AM	<b>Career Journey Panel</b> <b>Explore Self Discovery Through Stories of Career Journeys</b>
---------	---

Discover three unique career journeys, each sharing experiences from the beginning to the present. Gain valuable insights from the three career storytellers followed by group discussion and Q&A session.

- Maneuver decisions at forks in the road
- Identify your super power
- Learn to take risks

**Career Storytellers:**

Melissa Hagan, Director Strategic Evidence, Market Access, **BEIGENE**

Meena Narayanan, Process Analytical Scientist, **POSEIDA THERAPEUTICS**

10:00 AM	<b>Networking Refreshment Break</b>
----------	-------------------------------------

10:30 AM	<b>Unlock the Power of Proactive Career Pivots</b>
----------	--

Career pivots often happen when we least expect them, but they can reshape the way we view opportunities—and ourselves. Instead of waiting for change to happen, why not drive it? In this engaging series of vignettes, we'll show you how to take control of your career journey by proactively molding your mindset toward growth.

- Leverage your past experiences to thrive in new fields—even when you're starting with little to no direct experience
- Conquer steep learning curves by setting yourself up for success and quickly gaining new skills
- Overcome internal hurdles and limiting beliefs, particularly for underrepresented minorities, to unlock your full potential
- Harness the power of storytelling to amplify your unique journey and inspire others.
- Understand how biomarkers are transforming the clinical landscape and what it means for the next generation of STEM leaders

Julie Huang, former Staff Scientist, **ALECTOR**

11:15 AM	<b>Interactive Workshop: Transform Obstacles into Opportunities for Women Leaders in Pharma and Healthcare</b>
----------	--

This engaging and interactive workshop harnesses our collective experiences and explores innovative strategies for overcoming common barriers faced by women in pharma and healthcare. Learn from real-life scenarios as case studies that spark discussion and creativity, equipping participants with actionable ideas for growth and empowerment.

**Key Topics:**

- Navigating Workplace Bias: Share and discuss experiences of bias, both implicit and explicit, and brainstorm inclusive strategies for change.
- Enhancing Visibility and Recognition: Discover and develop approaches for increasing visibility in your field and gaining recognition for your work.
- Strengthening Mentorship and Networking: Exchange insights on building effective support networks to accelerate career development.

Mirta Grifman, Vice President, Clinical Development and External Innovation, **BIOSPICE THERAPEUTICS**

12:00 PM	<b>Networking Luncheon</b>
----------	----------------------------

1:00 PM	<b>Build Confidence, Overcome Imposter Syndrome and Take Your Seat at the Table</b>
---------	---

Confidence, self-assurance and a strong professional presence are essential for career growth, yet many talented individuals struggle with self-doubt and imposter syndrome. Take the next step in fully owning your capabilities and advancing your professional presence with confidence.

- Acquire actionable strategies to build confidence, silence your inner critic, and project a powerful presence in any setting
- Reframe negative thoughts, leverage your unique strengths, and communicate with authority
- Tackle self-doubt head-on, embrace your achievements, and make a lasting impression on collaborators, competitors and senior executives

Mindy Sivasubramanian, Senior Director, Clinical Operations, **ALUMIS**

1:45 PM	<b>Fireside Chat: Discuss Strategies for Women Advancing to the C-Suite in Biopharma, Med Tech, and Healthcare</b>
---------	--

Reaching the C-suite in biopharma and healthcare requires strategic career planning, industry insight, and a strong personal brand. This session offers actionable advice for professionals aiming for executive roles, including strategies for skill-building, networking, and leadership development.

- Navigate common barriers, build influence, and position yourself as a strong candidate for top leadership roles
- Assess key competencies, from managing high-stakes projects to leading cross-functional teams
- Consider insights from executives who have successfully climbed the ladder

Ana Sousa, Chief Regulatory Officer, **ASPEN NEUROSCIENCE**

2:30 PM	<b>Networking Refreshment Break</b>
---------	-------------------------------------

3:00 PM	<b>Understand the Impact of Policies on Performance, Recruitment and Retention</b>
---------	--

Policies that support employees have a positive impact on employee and corporate performance. Hear about why it's important to help create environments designed for success.

- Recognize that you may need to push on current systems to transform policy and culture
- Demonstrate how employee recruitment and retention are aided by policies
- Discover your role in creating positive experiences for others

Allison Doherty, US Executive Medical Lead, Hematology, **GSK**

3:45 PM	<b>Big Data and AI in Advancing Women's Health</b>
---------	--

Drawing from insights into AI-driven early cancer detection, learn about how big data and AI are shaping the future of personalized healthcare for women, from diagnostics to treatments.

- Predictive Insights for Disease Prevention: Explore how AI models are being trained to analyze vast datasets, enabling early identification of health risks such as breast cancer, osteoporosis, and cardiovascular conditions specific to women
- Personalized Healthcare Solutions: Highlight how AI-driven personalization tailors treatment plans, medication dosages, and lifestyle recommendations based on individual genetic, hormonal, and environmental factors
- Advancing Gender-Inclusive Data: Discuss how Big Data addresses the historical lack of female representation in clinical trials, creating more accurate health algorithms and improving diagnostic accuracy for women

Brittany Barreto, Author of Unlocking Women's Health, CEO **FEMHEALTH INSIGHTS**

4:30 PM	<b>Close of Conference</b>
---------	----------------------------

## PRICING

### IN-PERSON CONFERENCE ONLY PRICING\*

**\$1,996**

**SUPER EARLY BIRD**

Register by  
December 20, 2024

**\$2,196**

**EARLY BIRD**

Register by  
January 24, 2025

**\$2,396**

**STANDARD**

**\$2,596**

**DAY OF EVENT  
REGISTRATION**

### VIRTUAL STREAMING CONFERENCE ONLY PRICING\*

**\$1,796**

**SUPER EARLY BIRD**

Register by  
December 20, 2024

**\$1,996**

**EARLY BIRD**

Register by  
January 24, 2025

**\$2,196**

**STANDARD  
LIVESTREAM**

**\$2,196**

**ON-DEMAND  
ONLY**

## HOTEL INFORMATION



### WYNDHAM SAN DIEGO BAYSIDE

1355 North Harbor Drive  
San Diego, CA 92101, US

[BOOK NOW](#)

A block of rooms has been reserved at a discounted rate for our conference participants. To reserve a room, please visit the website URL above or call 800-996-3426. Mention DGE's **14<sup>th</sup> Advancing Women's Leadership in Pharma & Healthcare** and provide the Group Code 03192025DGE.

**The discounted reservation rate will be in effect until FEBRUARY 19, 2025.**

DGE is not affiliated with any third-party booking agencies, bureaus or travel companies. In the event that an outside party contacts you for any type of hotel or travel arrangements, please disregard these solicitations and kindly email us at [info@dgevents.com](mailto:info@dgevents.com). DGE has not authorized these companies to contact you and we do not verify the legitimacy of the services or rates offered. Please book your guest rooms through DGE's reserved guest room block using the details provided.

## GET INVOLVED

### PORTFOLIO DIRECTOR



Contact for speaking opportunities

**Kathy Stewart**

973 910 8291

[kstewart@dgeconfs.com](mailto:kstewart@dgeconfs.com)

### SPONSORSHIP DIRECTOR



Contact for sponsorship opportunities

**Amy Chapman**

561 571 7687

[achapman@dgeconfs.com](mailto:achapman@dgeconfs.com)

### SALES DIRECTOR



Contact for registration opportunities

**Marcie Cruz**

561 922 7817

[mcruz@dgeconfs.com](mailto:mcruz@dgeconfs.com)

### MARKETING DIRECTOR



For media partnerships, please contact

**Elizabeth Sleiman**

561 208 6927

[esleiman@dgeconfs.com](mailto:esleiman@dgeconfs.com)

### GOLD SPONSOR



### SILVER SPONSOR



### ASSOCIATION PARTNERS



[REGISTER](#)